

## S-LED-DLTS

### Features:

- \*Powerful output
- \*Easy installation from bottom
- \*High adjustable flexibility

### Specification:

**Model:** S-LED-DLTS

**Size:** 61.7mm(Dia.)(2.43") x 37.2mm(H)(1.46")

**LED Quantity:** 1 per fixture

**Power Consumption:** 3W per fixture

**Output Lumen:** 170lm per fixture

**Input Voltage:** 12 VDC

**LED Types:** SMT LED

**CRI:** >90

**Available Color (K):** 2700, 3000, 3500, 4000

**Lens:** 10°, 20°, 30°

**Tilt Angle:** 80°

**Dimmable:** Yes

**Cooling:** Heat sink

**Suggested Room Temperature:** 0°~40°C

**Suggested Room Humidity:** 20~80%

**Mounting Method:** Mount metal spring

**Application:** Interior use only

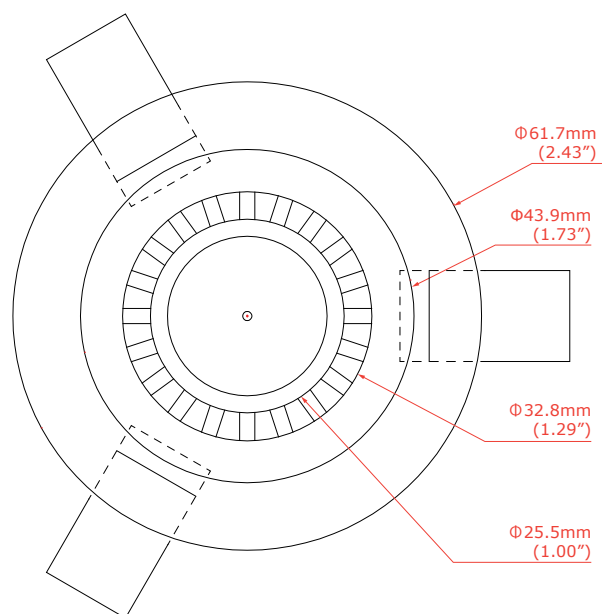
**IES file:** Available upon request

**Diagram:** Available upon request



### Dimension:

#### Bottom View



#### Side View

